

REV.	DATE	AMENDMENTS
##	29.11.2021	UPDATED INPOST LOCKERS
##	29.11.2021	UPDATED EV CHARGING INSTALL
##	29.11.2021	UPDATED INTEGRATED CLICK AND COLLECT CONVERSION
##	29.11.2021	UPDATED INPOST LOCKERS
##	29.11.2021	UPDATED HAND CAR WASH REFURB
##	15.09.2022	ASBUILT CREATED



Xref: \2590bg1#.dwg

SITE PLAN DETAILS	
STORE GROSS FLOOR AREA	EXISTING 72,475 Sq Ft
GROSS	6,733 Sq M
NET SALES	2,4x4.8
ANCILLARY	515
PARKING BAY SIZE	17
STANDARD CAR PARKING SPACES	20
PARENT & CHILD SPACES	552
DISABLED SPACES	1:13
TOTAL CAR PARKING SPACES	7
CAR PARKING RATIO	0
TROLLEY BAYS	7.20
DEDICATED COLLEAGUE PARKING	
BIKE RACKS	
SITE AREA ACRES	

HAND CAR WASH	
GROSS	EXISTING SQFT 1214
NET SALES	0
ANCILLARY	0

TIMPSONS DRY CLEANERS	
GROSS	EXISTING SQFT 163
NET SALES	0
ANCILLARY	0

EV CHARGING	
GROSS	EXISTING SQFT 1007
PARKING BAYS	5
ANCILLARY	0

PROJECT
2590 GUILDFORD
F 44.0 (31.7/4. 8)

DESCRIPTION
EXISTING SITE LAYOUT

DRAWING NO **2590pg##**

PHASE - ISSUE ##

SYSTEM ID 2590bg##.dwg
 2590pg##.dwg

SCALE **1:250@A0** DATE **15.09.2022**

UK PLANNING MANAGER **JORDI JURADO**

BENGALURU PLANNER **MONIKA RAJA**

RETAIL PLANNING & DESIGN IMPLEMENTATION

TESCO STORES LIMITED
 STORE PLANNING DEPARTMENT
 PROPERTY SERVICES
 HIGHWOODS BUILDING, KESTREL WAY, HERTFORDSHIRE,
 WELWYN GARDEN CITY, HERTFORDSHIRE, AL7 1GA
 TELEPHONE: 01717 256150

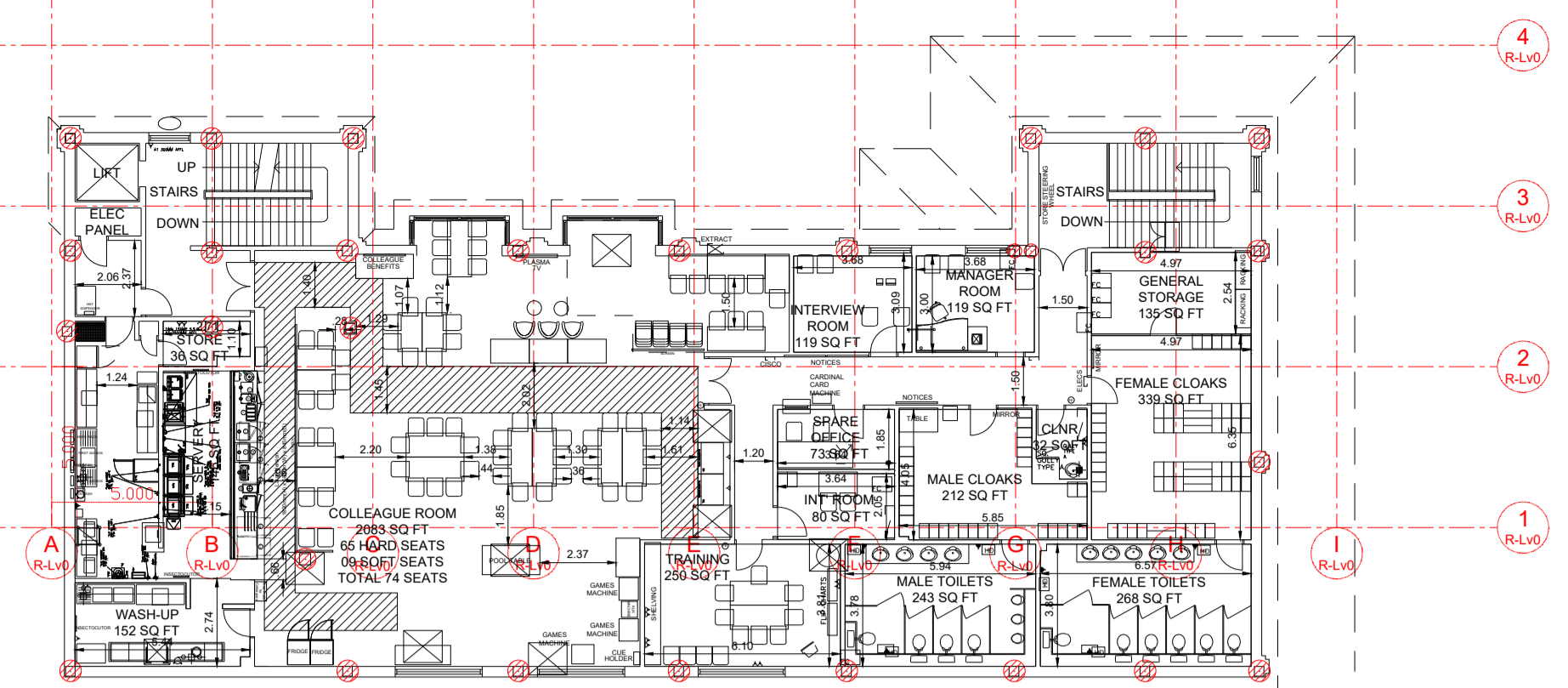
THE COMPANY AND THE STORES ARE REGISTERED IN THE REGISTRY OF COMPANIES AND ARE THE SOLE PROPRIETORS OF THE STORES. ALL RIGHTS ARE RESERVED. WITHOUT THE WRITTEN CONSENT OF THE COMPANY, NO PART OF THIS DOCUMENT OR ANY INFORMATION CONTAINED HEREIN MAY BE REPRODUCED OR TRANSMITTED IN ANY FORM OR BY ANY MEANS, ELECTRONIC OR MECHANICAL, INCLUDING PHOTOCOPYING, RECORDING, OR BY ANY INFORMATION STORAGE AND RETRIEVAL SYSTEM. © 2012 TESCO STORES LIMITED

EGERTON ROAD

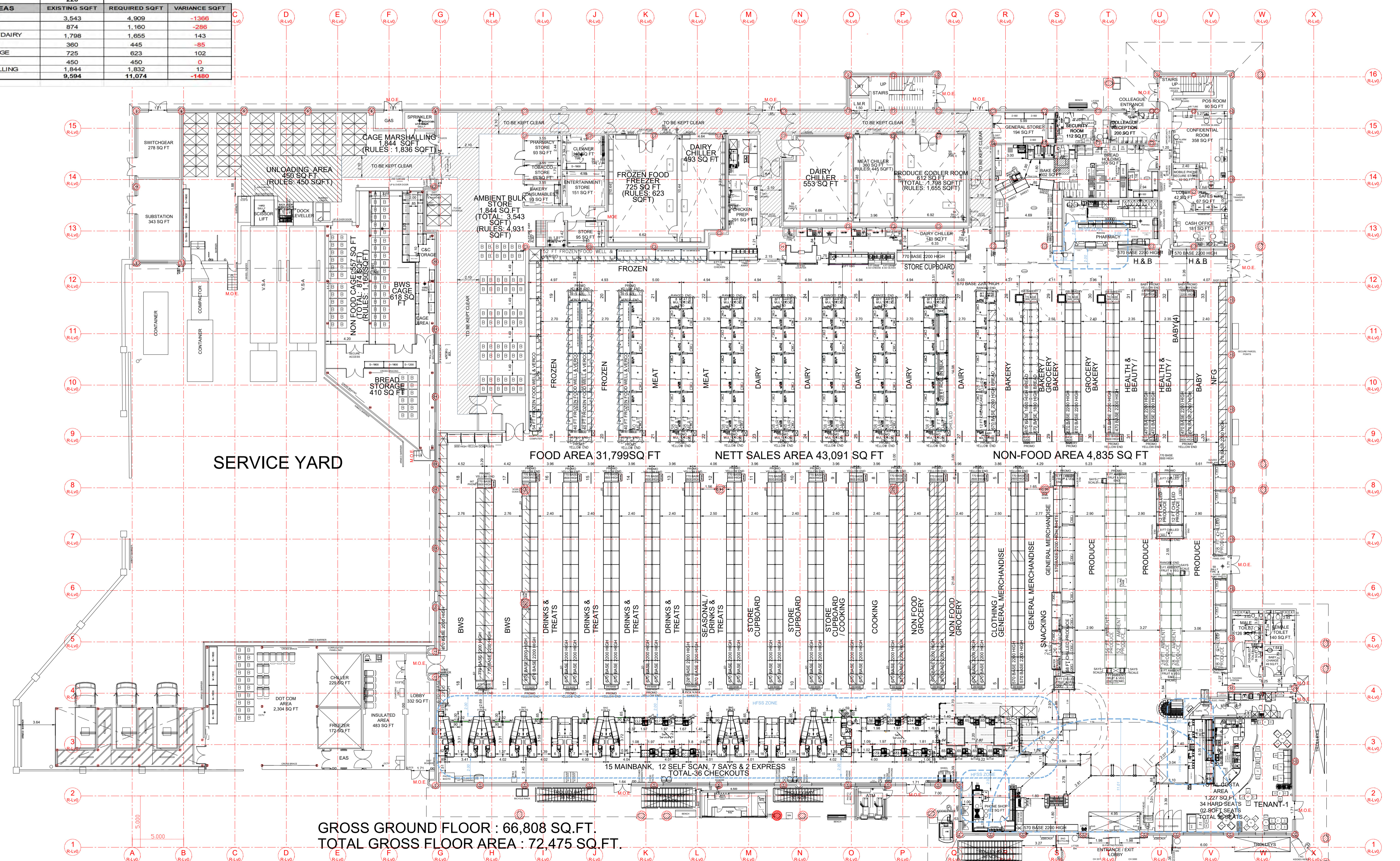
RETAIL PLAN AREA DETAILS	
BUILDING AREAS	EXISTING SQFT
GROSS BUILDING	72,475
Gross Ground floor	66,808
Gross Mezz floor	5,667
Gross First floor	0
TOTAL NET SALES	44,098
TESCO AREAS	EXISTING SQFT
NET SALES	43,091
Net Ground floor	43,091
Net Mezz floor	0
RETAIL SALES	36,634
SPLIT	31.7 / 4.8
NON FOOD	4,835
Seasonal & Power aisle	430
Health and Beauty	1,418
Baby	594
Clothing	104
General Merchandise	1,801
Checkouts & CSD	5,203
Internal foyer circulation	806
Services	487
Customer restaurant	0
Customer toilets	447
Dot Com total area	2,304
Offices/Ancillary	16,259

Costa AREAS		EXISTING SQFT
GROSS		1,227
NET SALES		1,007
ANCILLARY		220

STORAGE AREAS	EXISTING SQFT	REQUIRED SQFT	VARIANCE SQFT
FOOD AMBIENT	3,543	4,909	-1366
NON FOOD	874	1,180	-286
CHILLED PROD/DAIRY	1,798	1,685	143
CHILLED MEAT	360	445	-85
FROZEN STORAGE	725	623	102
UNLOADING	450	0	450
CAGE MARSHALLING	1,844	1,832	12
TOTAL	9,594	11,074	-1480



FIRST FLOOR GROSS AREA : 5,667 SQ.FT.



GROSS GROUND FLOOR : 66,808 SQ.FT.
TOTAL GROSS FLOOR AREA : 72,475 SQ.FT.

REV	DATE	AMENDMENTS
##	29.11.2021	UPDATED FINEST FIRE PIT
##	29.11.2021	UPDATED PROJECT ADDER
##	29.11.2021	UPDATED PROJECT BLOOM
##	29.11.2021	UPDATED SAYS BARRIER REMOVAL
##	29.11.2021	UPDATED LARGE STORES GATES
##	29.11.2021	UPDATED ATM REPLACEMENT
##	11.12.2021	UPDATED HFSS EXCLUSION AREA
##	14.04.2022	UPDATED ASBULTS LAYOUT

PROJECT
2590 GUILDFORD
F 44.0 (31.7/4.8)

DESCRIPTION
EXISTING RETAIL LAYOUT

DRAWING NO 2590gag##

PHASE - ISSUE ##

SYSTEM ID 2590g##.dwg
2590bg##.dwg

SCALE 1:200@A1 DATE 14.04.2022

UK PLANNING MANAGER PETER MALLACE
BENGALURU PLANNER KISHORE M

TESCO

RETAIL PLANNING & DESIGN IMPLEMENTATION

TESCO STORES LIMITED
STORE PLANNING DEPARTMENT
PROPERTY SERVICES
HIGHWOODS BUILDING, KESTREL WAY, HERTFORDSHIRE,
WELWYN GARDEN CITY, HERTFORDSHIRE, AL7 1GA
TELEPHONE: 01707 395150